



Permit 217
Non-Profit
Postage
PAID

c/o Sherri Kirkpatrick
1401 West Truman Road
Independence, MO 64050
United States of America



Address Correction Requested



Thanks to all of the amazing reviews we got from all of you, we've won a **2012 Top-Rated Award** from GreatNonprofits. Check out our great stories: <http://greatnonprofits.org/reviews/profile2/healthed-connect>

For ongoing stories and up-to-the-minute program news, go to our web site www.healthedconnect.org and click on **BLOG** for stories and **Photo Gallery** for pictures.



Sharing from Sherri

2012 has been an unbelievable year of growth for HealthEd Connect. Construction was completed on two new classrooms in Chipulukusu; construction is underway on two additional classrooms in Kasompe; and a long dreamed of Kafwa Center is nearing completion. It's all about what goes on inside the buildings, however, that makes your heart proud. Orphans and vulnerable children who've never been to school before are learning to read and write. Children who too frequently go days without food are now guaranteed daily school lunches. Grieving orphans have found a new family in support groups organized just for them.

Income Generating Activities are slowly taking hold. And a sense of pride is emerging throughout the communities. The credit for this transformation goes to you, our generous donors, and to the many volunteers – both in the U.S. and on-site – who gave 18,238 hours of service this year to make it happen.

A sincere and heartfelt thank you!

Sherri Kirkpatrick



ANNUAL REPORT 2012
EMPOWERING WOMEN & CHILDREN



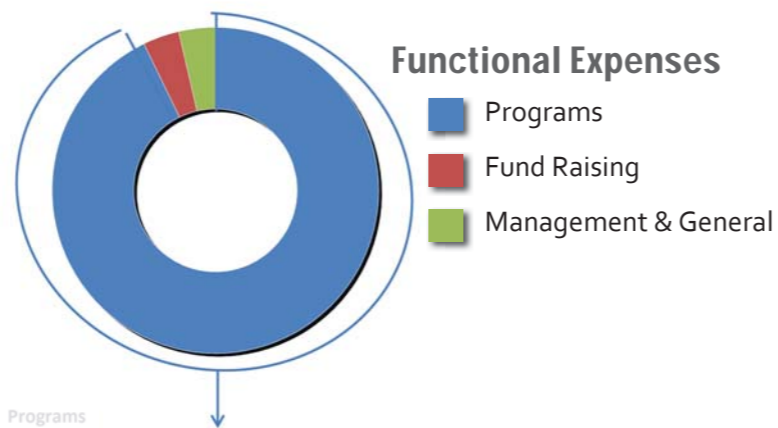
FINANCIAL Transparency

A copy of the Annual Independent Audit Report may be provided upon request.

Expenses

Programs	93%	\$388,377
Fund Raising	4%	\$15,751
Management & General	3%	\$14,583
Total	100%	\$418,711

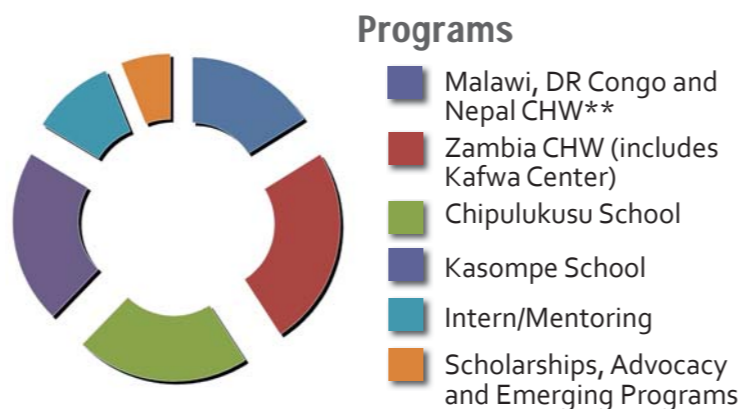
Audit for YE May 31, 2012, Table of Functional Expenses (Includes In-kind contributions & services)



Programs

Malawi, DR Congo & Nepal CHW**	16%
Zambia CHW (Includes Kafwa Center)	25%
Chipulukusu School	22%
Kasompe School	21%
Intern/Mentoring	10%
Scholarships, Advocacy & Emerging Programs	6%
Total	100%

Audit for YE May 31, 2012, Table 3 (Includes on-site volunteers)



**Community Health Worker

1,283
BABIES DELIVERED

84 COMMUNITY HEALTH WORKERS

18,238
VOLUNTEER HOURS

Intern Infusion

Young adults are inspiring! Committed to nurturing the leadership skills of young adults while at the same time benefitting from their creativity, HealthEd Connect opened positions for three interns in 2012. Parker Johnson, Holdenville, Oklahoma, served as a graphic design/ social media intern, designing fundraising material. Parker worked closely with the Development Committee in designing a Capital



Campaign brochure. Kelsey Welch, Austin, Texas, serves as mentor to the Child Support Specialists (CSS), women who run emotional support groups for grieving orphans. Kelsey assisted with the training of the CSS in 2011 and returned to Zambia in February to personally mentor the volunteers. Lisa Ash, Kansas City, Missouri, spent five months in Zambia providing instructional support and professional development workshops for the community school teachers in Chipulukusu, Kasompe, and ZamTan. Upon returning from Africa, Lisa joined the staff of HealthEd Connect as a Program Specialist, taking on administrative and fundraising tasks. The Intern program has already proven invaluable to HealthEd Connect in innumerable ways.

Bearers of Sustenance

Before heading out on weekly home visits, Kafwas Priscilla and Joyce bag small portions of ground-corn mealie meal. A plastic shopping sack will hold 5 kilograms of mealie meal, enough to make nshima for a family of six for about two days. "We deliver to patients who are too sick, too young, or too old to leave their home and make an income," explains Priscilla. They also delivered 250 milliliter bottles of Rina cooking oil and 1 kilogram bags of sugar, all staples for Zambian cooking. These gifts are a result of a cooperative effort between HealthEd Connect and the Jubilee Center, a Christian organization which provides food staples to church groups who care for the sick in their community. The Kafwa keep careful records of the people who benefit from these donations and find joy in being bearers of sustenance.



Supporting Precious



Precious sits in the shade outside her mud-bricked home by herself, her younger sisters gone off to play and her mother away for the day. The oldest of four girls in a single-mother household, it is her job to manage a small "market" of mealie meal and charcoal outside their front door. Precious is one of many young girls with HIV cared for by the Kafwa of Chipulukusu, Zambia. As Precious says, "The Kafwa started visiting me three years ago and I feel happy when they visit because I know they are coming to see me. In the past I was always so worried and I didn't know how to get better because I didn't believe in HIV. Now I accept and understand. I'm still sick, but I'm getting better." The Kafwa provide guidance for Precious to seek the right ointment to heal a painful rash that covers her fragile body, as well as encouragement and advice. They are an incredible support team to Precious and her family.

3

COMMUNITY SCHOOLS

60

HOME-BOUND CLIENTS SERVED

30,000

BABIES MONITORED

We're in print!

Our work has been published in an article based on interviews with 306 orphans and vulnerable children and 158 primary caregivers in our schools.

Kirkpatrick, S., Rojjanasrirat, W., South, B., Sindt, J., & Williams, L. (2012), **Assessment of Emotional Status of Orphans and Vulnerable Children in Zambia.** *Journal of Nursing Scholarship*, 44(2), 194-201.



From Dreams to Reality

After 20 years of providing services for others, the Kafwa health worker volunteers in Chipulukusu are getting something in return to make their work easier: a Kafwa Center to house their dreams. Scheduled for completion in January 2013, the Center will provide a kitchen for school lunch preparation (the cooking of huge pots of nshima will still be done outside over an openfire); a multi-purpose room for income generating activities such as sewing and paper bead making; a meeting/first-aid room; and a small library for the school. The entire community is watching with eager anticipation as this iconic building takes shape.



Loving Arms for Grieving Orphans

For the 1.3 million orphans living in Zambia, life is tough. Often cared for by elderly grandmothers or extended family members already living on the margin, just obtaining food and bare necessities are often the only goals. Recognizing the unaddressed emotional needs of the grieving orphans in their communities, the Kafwa health workers requested training that would equip them to help the children. Upon acquiring new communication skills, obtaining a few supplies, and learning how to lead activities for grieving children, the newly trained Child Support Specialists (CSS) organized small support groups for the orphans. The children's response was immediate and heartwarming! Gaining a group of friends 'just like me' and finding a warm-hearted CSS they call 'mama' or 'grandma,' the children immediately increased participation in class, made friends, and became less tearful.

BOARD OF DIRECTORS

Sharon L. (Sherri) Kirkpatrick, PhD, RN, FAAN
Board Chair
Professor Emerita, Graceland University
Lee's Summit, MO

John P. (Jac) Kirkpatrick, BS, ME
Board Treasurer
Former Field Adm of Africa, Asia & Europe
Lee's Summit, MO

Cherry Newcom, BA
Board Secretary
Children's Advocate
Westminster, CO

Paulette E. (Polly) Brown Mehlisch, BSN, MSN
D. R. Mehlisch & Associates
Palm Desert, CA

Lois M. Giddens
Docent, San Juan Capistrano
San Clemente, CA

Denise Leichter, RN
Shamrock – Senior Health & Advocacy
Lake Balboa, CA

R. Michael (Mike) Keeble, CPA, MBA, EdS
Associate Vice Chancellor of Finance, KUMC
Kansas City, KS

Kristi Kirkpatrick, BSN, BSN
Former Pediatric ICU Nurse
West Des Moines, IA

Michael Lewis, BA, JD
Axiom Global, Practice Manager
Los Angeles, CA

Michelle Mahlick, BA, MA
Philosophy Instructor, University of Wisconsin
Milwaukee, WI

Jeffrey D. Manuel, BS, MD
Palliative Care Specialist, Kaiser Permanente
Denver, CO

Ron Mathews, BA
Palo Alto Networks, Sr. International Tax Manager
Palo Alto, CA

Paul Thomson, PhD
Former President Truman Heartland Community Foundation
Lee's Summit, MO

Brenda Williams, BS, MA, MA
Catholic Charities of KC-St. Joseph, Grant Manager
Kansas City, MO

INTERNS & VOLUNTEERS

Interns:

Lisa Ash, Teacher Mentor
Kelsey Welch, Child Support Specialist Mentor
Parker Johnson, Graphic Arts

Volunteers:

Gershon Chifumbe, Zambian Communications Representative

Community Health Worker Supervisors:

Martha Malla - Nepal
Ireen Nyirenda - Malawi
Joesphine Kipampe - DR Congo
Joyce Ngosa - Zambia, Ndola
Theresa Mpande - Zambia, Chingola
Angela Mbola - Zambia, Zamtan



Zamtan School Board:
Jackson Majai, Chairman
Aaron Chongo, Treasurer

Kasompe School Board:
Mr. Augustine, Chairman
Isaih Dyololo, Treasurer

Chipulukusu School Board:
Bernard Chalwe, Chairman
Dismas Mulenga, Treasurer

Zambulances to the Rescue

Zambulances are a literal life saver in the Democratic Republic of Congo. With no cars or other transport vehicles available, propping someone on a bicycle has been the only way to get seriously ill people to the rural Kaboka hospital. Now two Zambulances are available to transport patients more rapidly and comfortably from as far away as 30 kilometers. Even with this welcomed new convenience, the trip continues to be perilous with narrow make-shift rail bridges, rutted mud trails and pockets of deep sand. In spite of ongoing challenges, however, the villagers see the Zambulances as a huge improvement.



Eager for Education

Mary experiences daily hardships caring for four nieces while also supporting her own children. "I used to do field work and piecework but I had to slow down because of my high blood pressure," she explains. "I'm married, but my husband is elderly and uses a cane. My oldest daughter still lives at home and she helps by selling avocados in the market. If the Kasompe Community School of Peace weren't there we could not afford education for the girls." Posing with Aunt Mary are twins Anna and Josephine, both in Grade 4. A younger sister is in Grade 3.

The girls score well on tests because they are encouraged to study at home. "When the children started learning there at the HealthEd Connect Community School, they became so excited about school. The three girls like school so much! They come home and tell me excited stories," Mary beams as she talks about the difference the school makes in her family.



Connecting Programming with Passion

2012 saw the launch of an exciting new program, welcoming 17 young adults on board as Connector Specialists. Connector Specialists have a passion for empowering communities through sustainable development initiatives and are willing to roll up their sleeves and do something about it. The resumes of these young professionals are impressive: ranging from business administrators to health care practitioners, from fundraising specialists to classroom school teachers. Connector Specialists engage in HealthEd Connect initiatives by joining teams that work on special projects, facilitating networking, and advising HealthEd Connect Leadership. While HealthEd Connect benefits from the expertise of these young adults, they in turn advance their career trajectory through meaningful interaction with a not-for-profit organization. What a win-win!

THANK YOU... 2012 Donor List

This list reflects gifts received between June 1, 2011 -- May 31, 2012

Over \$25,000

Community of Christ World Hunger
Tangible Love Grant

\$10,000 to \$24,999

Duet Resource Group
Jim & Nancy Minnick
Ron & Judy Carter

\$5,000 to \$9,999

Pam & Jim Ash
Lois & Jerry Giddens
Cherry & Jay Newcom
David & Betty Nipper

\$1,000 to \$4,999

Richard Resch
Anonymous
Kelly & Tammy Everett
Community of Christ
East 39th St. Congregation
Kelsey Welch
Sharon Resch
Paul & Marilyn Thomson
Dunn Family Foundation
Gorham, Gold, Greenwich & Assoc.
Laurie & Randy Heintz
Nancy & Elmer Secker

\$500 to \$999

Mile High United Way
Judith & Bill Brett
Raymond & Betty Minton
Douglas Massey &
Gisele Fournier- Massey
Richard & Mickey Simmons

Michelle Mahlik
Van & Mary Butler
Mary Fuentes
John & Bette Sellars
Melinda & Bob Walker
Ron Mathews
Mary Lou Ash
Evelyn & Bud Barritt
Warren & Barbara Gose

Howard & Donna Lee
Frank & Louise Minton
Random Acts of Kindness
John & Ruth Smith

\$200 to \$499

Community of Christ Inland Empire
Rosemary & Larry Bonine
Ashley Guinan
Isabella Fisher
Brenda Williams
Dawna Gilbert
Ron & Barb Harmon
Christopher & Carrie Hohl
Brent & Julie Kirkpatrick
Les Meredith
Randall & Mary Pratt
Rotary Club of Boca Raton
Random Acts of Kindness
Penelope McCurdy
Mike & Jandy Barentine
Gary & Ramona Collins
Community of Christ
East Wenatchee
Michael & Catherine Keeble
Jeffrey & Karyn Manuel
Micro-Comm, Inc.
George Norwood
William Worthen



Gifts In Kind

Laura Carnie
Corporate CopyPrint
Rita Goehner
Tim & Donna Lewis
John & Sandy Van Der Walker

650

SCHOOL CHILDREN

18 SCHOOL LUNCH COOKS

50,000

SCHOOL LUNCHES PROVIDED

5

TRADITIONAL BIRTH ATTENDANTS

17

YOUNG ADULT CONNECTOR SPECIALISTS

2

NEW ZAMBULANCES FOR D.R. CONGO